



W3 WETROOMS FWM

INSTALLATION GUIDE



Simplicity
WETROOMS

W3 INSTALLATION GUIDE

1. USES

W3 Wall Membrane is a ready to use, pale blue, solvent free paste, with superior elasticity which provides a waterproof barrier between the substrate and wall tiles.

It can be used on all commonly encountered substrates including plasterboard, timber, concrete block, cementitious render, gypsum plaster and tile backer board, with a working temperature range of +5°C to +30°C.

W3 is quick and easy to apply using a brush or short pile roller; to give a continuous thin layer, at least 1mm thick.

Wall and floor junctions, along with other critical areas, should be supported using W3 Reinforcing Tape.

Dusty surfaces and gypsum based plaster should be primed using W3 primer.

2. ELEMENTS

W3 Wall Membrane

W3 is a single coat acrylic paste to be installed prior to the application of natural stone, porcelain and ceramic tiles.

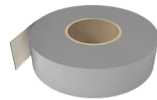
8kg



W3 Reinforcing Tape

A self-adhesive HDPE butyl Reinforcing Tape with an easy peel release liner; used for reinforcing all wall and floor junctions, butt joints, niches and other detail work within the membrane.

75mm x 10m



W3Primer

A quick drying acrylic primer for use prior to the application of W3 Wall Membrane and W3 Reinforcing Tape.

500ml



3. APPLICATION - A STEP BY STEP GUIDE

Please ensure that you read these instructions in full before commencing work. The complete system should be applied strictly in accordance with these instructions.

Surfaces must be smooth, solid and sound. Ensure all surfaces are clean, dry and free from dust, grease oil etc. and free from all contaminants. Oily or greasy surfaces should be cleaned with suitable proprietary cleaner and thoroughly rinsed and allowed to dry.

Junctions/corners must be first reinforced with W3 Reinforcing Tape as necessary.

Ensure that both primer and membrane are compatible with any existing coatings. If in doubt please refer to the manufacturer.

Care should be taken to ensure the ambient room temperature is at least 5°C. Conditioning of the membrane in a warm area prior to use will enhance its adhesion properties during the application.

Coverage: approx 1kg per m² (8kg tub / 8m²)

1 PRIME WALL JUNCTIONS

Use a brush or roller to apply the primer along wall junctions prior to application of the W3 Reinforcing Tape.

Allow Primer to fully dry before proceeding with next step (approx 30 minutes).

2 TAPE WALL JUNCTIONS

Apply W3 Reinforcing Tape to the Vertical wall junctions and other joints.

If you have any niches, built-in benches and other similar details within the shower area, with joints we recommend using W3 Reinforcing Tape to support these areas.

- Cut the W3 Tape to the length required.
- Fold in half along the pre-scored line. Offer up to the wall, with the fold towards the wall.
- Lift up lower lip, remove backing paper and stick to the wall.
- Repeat this process until all wall to wall junctions have been taped.

3 PRIME WALLS

Use a brush or roller to apply the primer: Dusty surfaces and gypsum based plaster should be primed prior to the application of W3 wall membrane, with W3 primer.

Allow Primer to fully dry before proceeding with next step (approx 30 minutes).

W3 INSTALLATION GUIDE

4 APPLY W3 TO THE WALLS

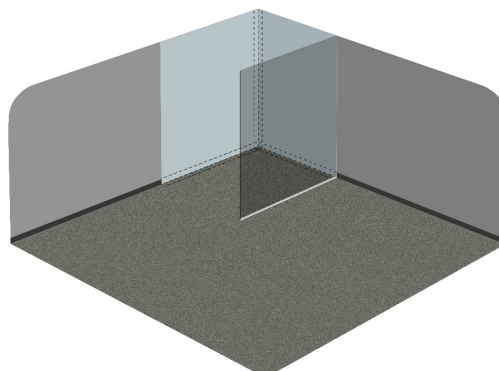
Apply one crossed coat of the W3 with a roller or brush - the final thickness should be at least 1mm thick.

Touch dry in 30 minutes.

5 RECOMMEND

W3 should be applied to a minimum height of 2000mm on all wall surfaces within the shower area, linking onto the floor membrane with a minimum overlap of 60mm.

Compatible with W1 Floor Membrane. When installed together, they provide a complete waterproofing and decoupling solution, backed up by our Lifetime Guarantee.



4. TECHNICAL DATA

W3 PERFORMANCE & COMPOSITION

Typical Coverage	±1 1kg / m ² 8kg tub / 8m ²
Drying Time	30 minutes
Before Tiling	24 hours
Direct Contact with Water	7 days
Application Temperature	5°C to 30°C
Service Conditions	-20°C to +50°C

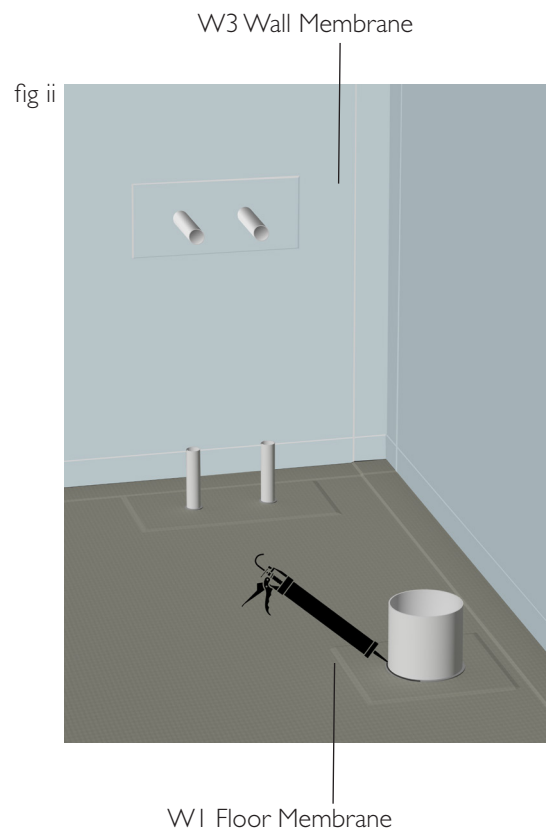
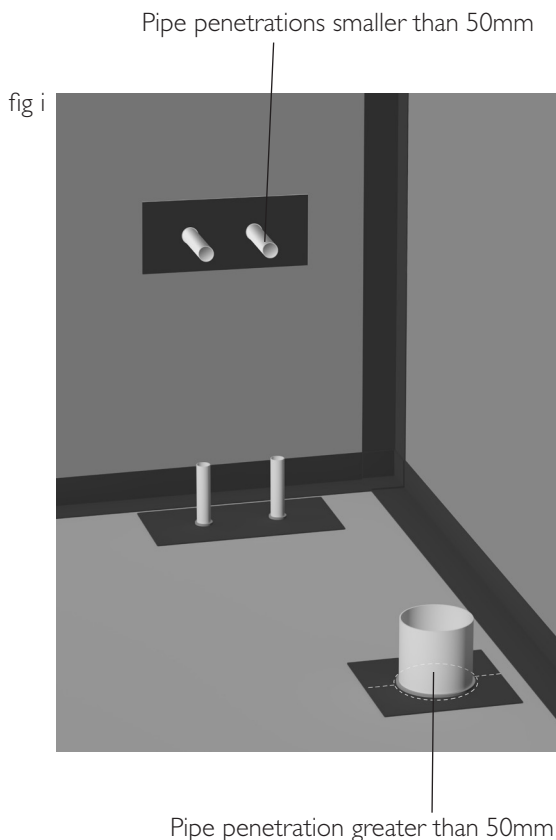
±1 Assumes thickness of 1mm

Full technical data sheet available on request from our technical department.

All times refer to site conditions of 20°C. These times will be increased at lower temperatures and reduced at higher temperatures. The above performance figures are typical values and should not be considered a product specification.

5. PIPE PENETRATIONS / ENTRIES

1. Pipe penetrations should be examined to ensure that the membrane will be fully supported.
2. Any voids around the pipe penetrations should be filled using appropriate filler and allowed to dry.
- 3a. For small pipe penetrations (smaller than 50mm) cut a hole in the W1 Reinforcing Tape to suit the pipe size, remove backing paper, then press down on the Reinforcing Tape to ensure it has fully adhered to the substrate (fig i).
- 3b. For large pipe penetrations (greater than 50mm) apply two pieces of Reinforcing Tape around the pipe, by carefully cutting the Reinforcing Tapes to suit the pipe entry size, remove backing paper, then press down on the Reinforcing Tape to ensure it has fully adhered to the substrate (fig i).
4. When applying the membrane, cut holes in the membrane approximately 5mm - 10mm larger than the penetration (to assist with applying membrane over the pipe penetration), as per 3a or 3b. Apply the membrane over the Reinforcing Tape.
5. Apply W1 Jointing Compound onto the Reinforcing Tape joints, around the pipe penetrations and on to the membrane to all Reinforcing Tape joints (fig i).
6. Repeat the process of either 3a or 3b for pipe penetrations on the wall, then apply W3 Wall Membrane over the top of the Reinforcing Tape.



W3 INSTALLATION GUIDE

7. WETROOM WATERPROOFING SPECIFICATION

W1 Floor Membrane - Entire Bathroom

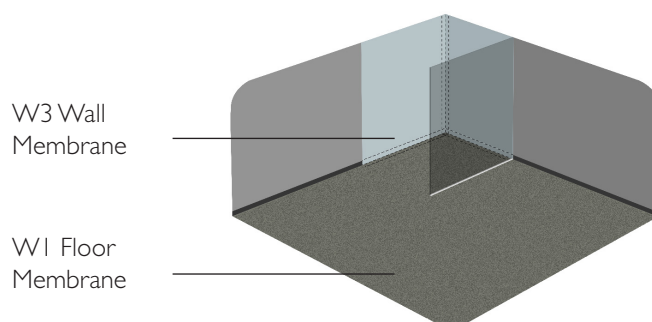
W1 Floor Membrane to be applied to the entire bathroom floor area.

Additional Reinforcing Tape to be applied to all wall junctions, soap niches and other such detail within the shower area.

W3 Wall Membrane to be applied to the walls within the shower area only, to a minimum height of 2000mm and overlapping the Reinforcing Tape.

All pipe penetrations to be sealed with W1 Jointing Compound.

For steam rooms W3 Wall Membrane should be applied to all the walls.



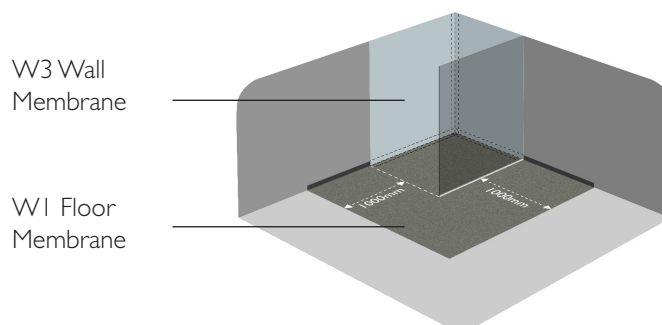
W1 Floor Membrane - Shower area + 1 Metre

W1 Floor Membrane to be applied to the shower floor area, plus a minimum of 1 metre outside the shower area in all directions.

Reinforcing Tape to be applied to all wall junctions, soap niches and other such detail within the shower area.

W3 Wall Membrane to be applied to the walls within the shower area only, to a minimum height of 2000mm and overlapping the Reinforcing Tape.

All pipe penetrations to be sealed with W1 Jointing Compound.



Please Note

Decoupling will only be effective when W1 Floor Membrane is applied to the entire bathroom floor area.

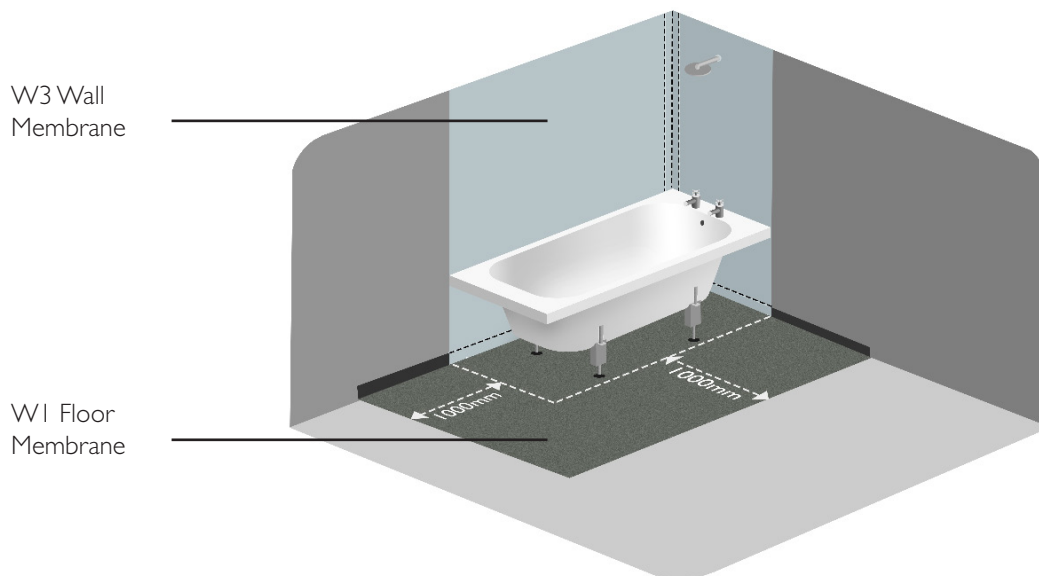
8. OVER BATH SPECIFICATION

W1 Floor Membrane is to be applied to the floor area under the bath, plus a minimum of 1 metre outside the bath in all directions.

Reinforcing Tape is to be applied to all wall junctions, soap niches etc within the bath area and overlapping onto the Reinforcing Tape.

W3 Wall Membrane is to be applied to the walls within the bath area, to a minimum height of 2200mm and down to the floor, overlapping the Reinforcing Tape.

All pipe penetrations to be sealed with W1 Jointing Compound.



Please Note

Decoupling will only be effective when W1 Floor Membrane is applied to the entire bathroom floor area.

9. ANHYDRITE SCREED, LOOSE LAID SCREED & LATEX LEVELLING COMPOUNDS

- The above types of substrate may require sealing prior to priming. This will normally be required approx. 24/48hrs prior to the installation of W1 Floor Membrane to ensure it is sufficiently dry.
- Fully sweep the area to be sealed to remove as much dust as possible.
- Mix Primer 5:1 ratio with clean water.
- Fully soak the area with sealer ensuring all areas are covered. (If the area hasn't been sealed 24/48hrs prior to installation, then the sealer must be left to fully soak into the substrate for approx. 15/20min's before being forced dried with the use of heaters & fans).
- When the sealed area has fully dried it can then be primed as normal using the Primer.
- It is recommended that a bond/adhesion test is carried out prior to the application of the waterproofing membrane.

