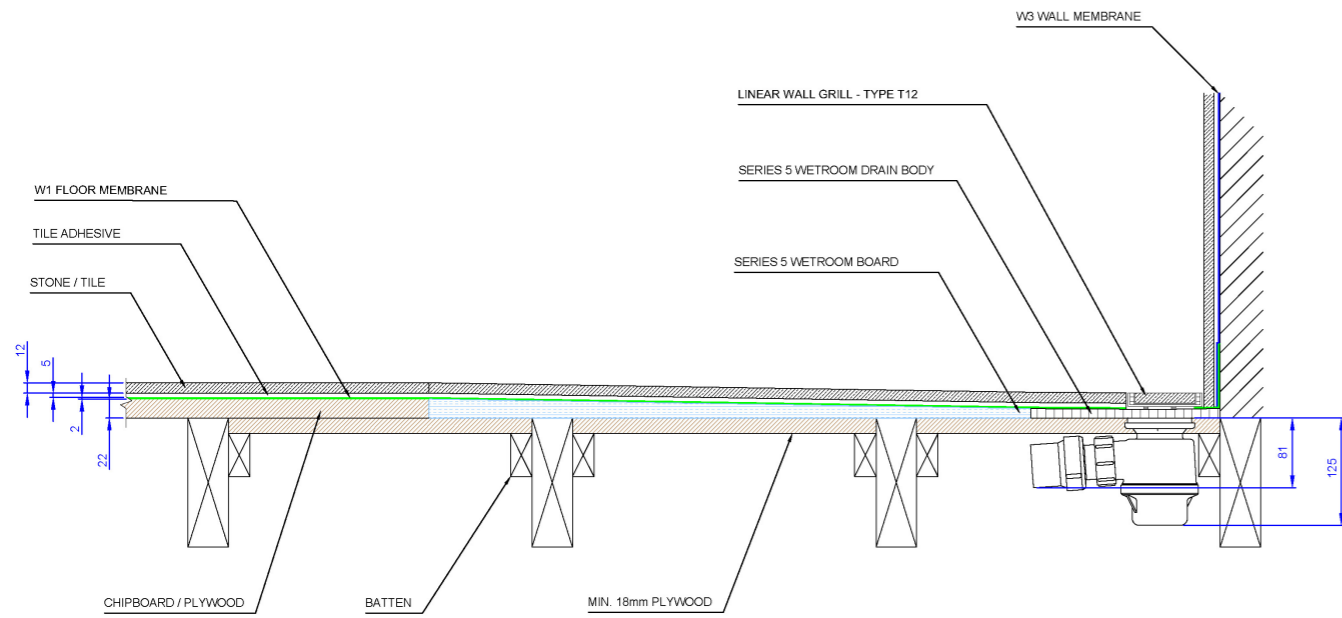
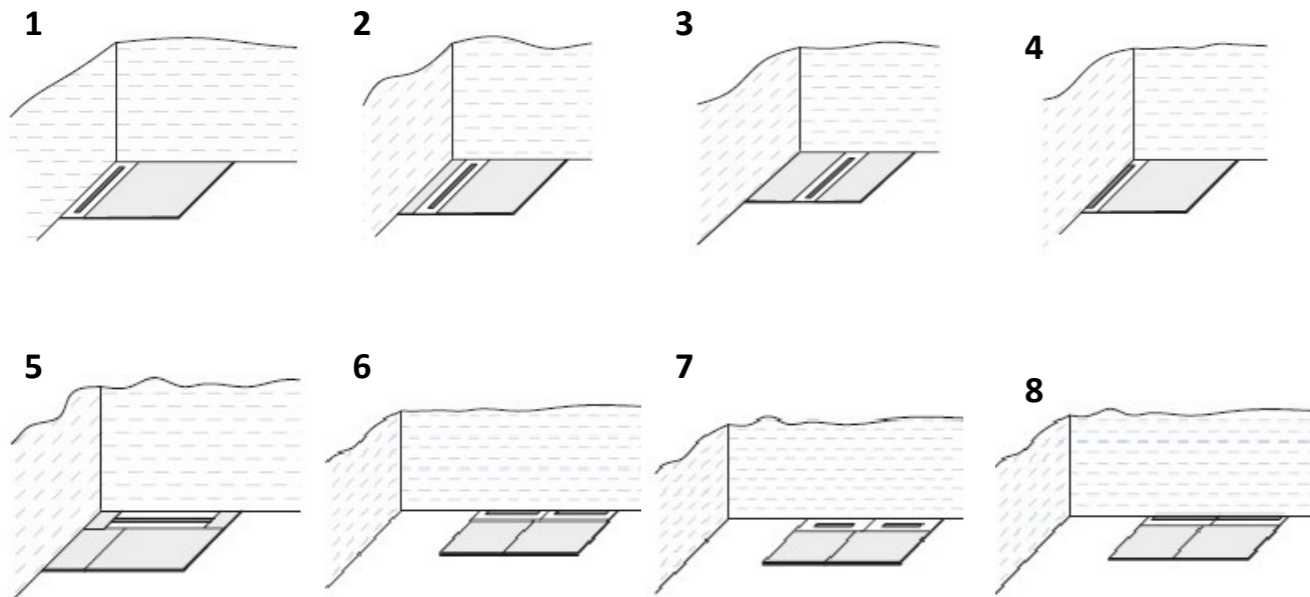


4. Typical Floor Build-Up



5. Typical Layouts



6. Important Notes

Ensure that the wetroom area is waterproofed using the W1 Floor Membrane kit and W3 Wall Membrane. See brochure/price list for full details.

Always tile using a 100% adhesive bed in the wetroom area

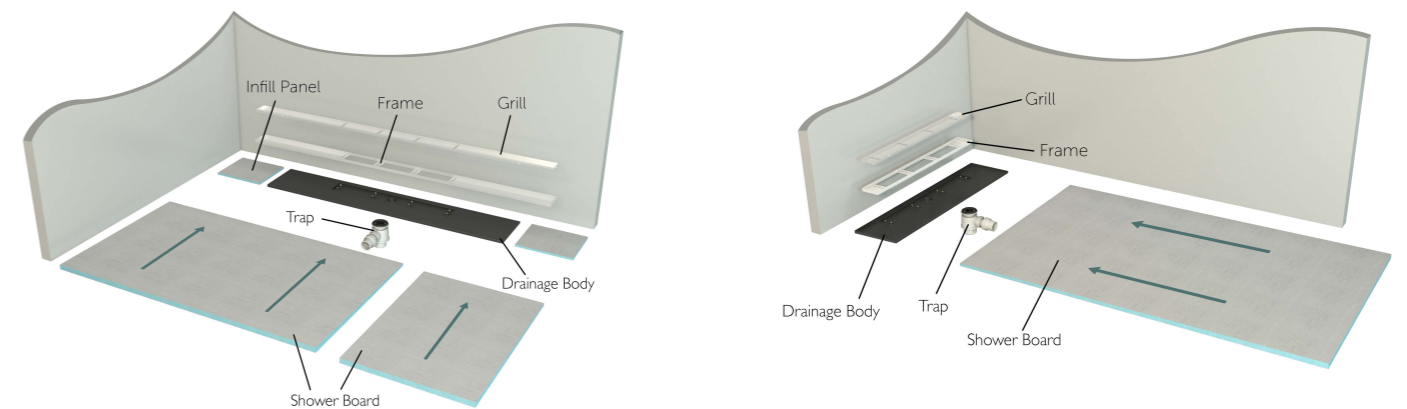
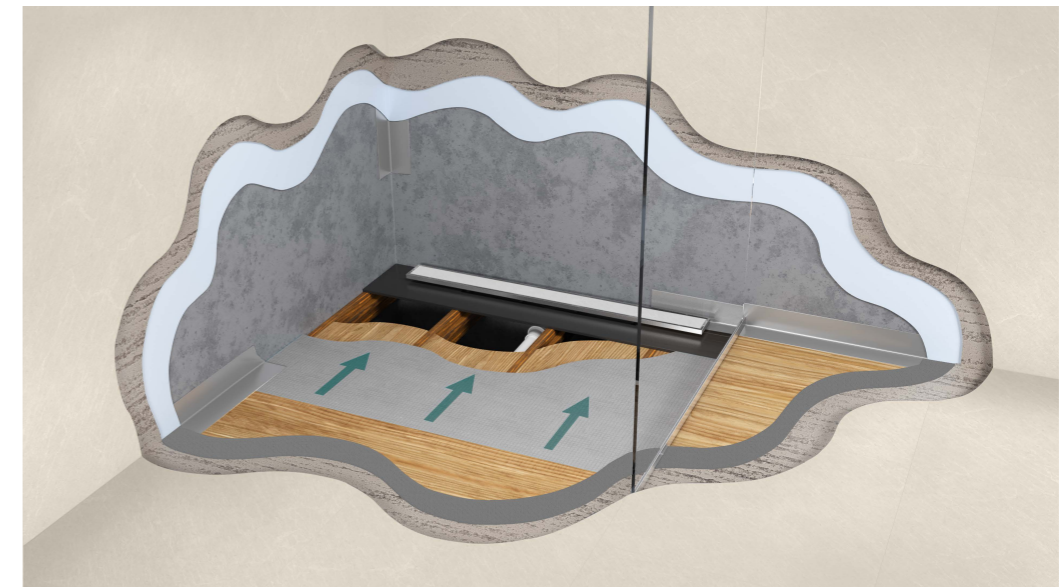
For further assistance please contact your showroom

Simplicity

WETROOMS

Series 5

Installation Instructions



1. Introduction

Designed for timber floors, the Series 5 Wet-Floor system is a unique concept in wetroom technology that can be used in a number of configurations to create a wetroom of almost any size.

The system is versatile and cost effective and can be installed with the linear drain positioned in the centre of the shower, just off the wall or up against the wall.

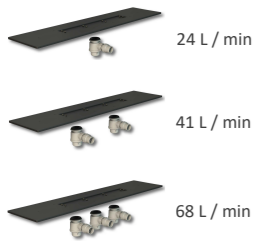
Consisting of three main elements, the Series 5 Wet-Floor system is simple to configure. Start by selecting the required number of **Drainage Components** and **Shower Boards**, then simply choose the appropriate **Floor or Wall Grill** to suit your wetroom layout.

Please read these instructions in full prior to commencing work.

2. Components

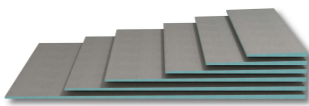
1) Drain Body

Single, Double, or Triple Trap



Infill Panel
600mm x 300mm

2) Shower Board



Full Sized Boards	Half Sized Boards
300mm x 1200mm	300mm x 600mm
500mm x 1200mm	500mm x 600mm
700mm x 1200mm	700mm x 600mm
800mm x 1200mm	800mm x 600mm
900mm x 1200mm	900mm x 600mm
1000mm x 1200mm	1000mm x 600mm
1100mm x 1200mm	1100mm x 600mm
1200mm x 1200mm	1200mm x 600mm
1500mm x 1200mm	1500mm x 600mm

3) Floor or Wall Grill



15 Lengths

600mm	700mm	800mm
900mm	1000mm	1100mm
1200mm	1300mm	1400mm
1500mm	1600mm	1700mm
1800mm	1900mm	2000mm

5 Finishes

Type SD, T8, T12, T20, TF

For grill types T8, T12, T20 & TF greater than 1500mm, the insert is supplied in two equal sections.

3. Step by Step Installation Guide

1



Measure and mark out the area of the desired wetfloor.

Measure and mark to the centre line of the next joist, mark and remove floorboards.

2



Check that all joists are level. Where necessary install noggins to support the edges of the wetfloor. Install timber battens 18mm from the top of the exposed joists.

3



Cut and install 18mm plywood and fix onto the timber battens, to provide a support base for the wetfloor area finishing flush with the top of the joists.

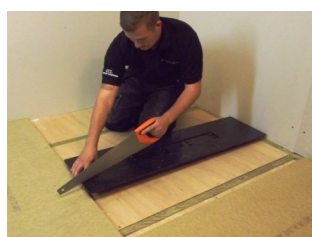
4



Mark out the position of the Drain Body
Trim the width if necessary by cutting an equal amount off of each side

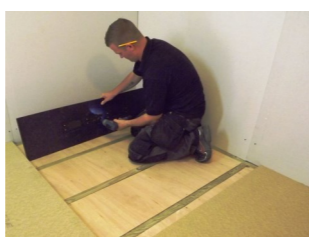
Note: See typical layouts on p4

5



Where the grill is to be positioned against the wall, the Drain Body is trimmed to 220mm along the pre-marked 'cut line'

6

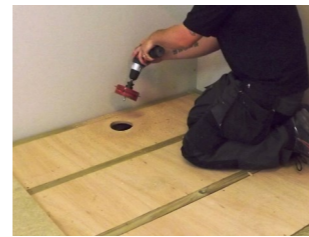


Drill a 50mm hole for the trap in the required position, using the centre line as a guide. Ensure the pilot drill marks the 18mm ply below.

Note: Add up to 3 traps to increase flow rate.

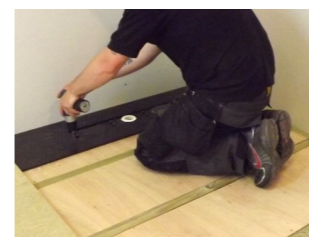
2

7



Using the pilot hole in the 18mm ply, cut a 100mm hole in the ply support for each trap.

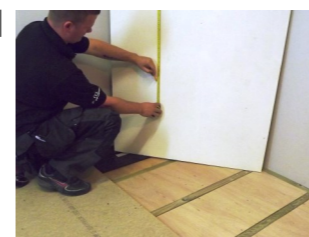
9



Screw the Drain Body into place using the pre-formed screw holes.

Note: Take care to avoid wastepipe

11



Carefully measure the Tapered Boards to fill the remainder of the wetfloor area, using Infill Panels where necessary.

Note: See typical layouts on p4

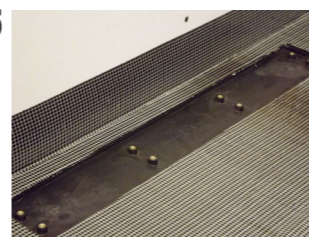
13



Ensure the thinner edge of the Shower Board [11mm] abuts the Drain Body.

Note: Take care not to cause damage when kneeling / placing point-loads onto the boards.

15



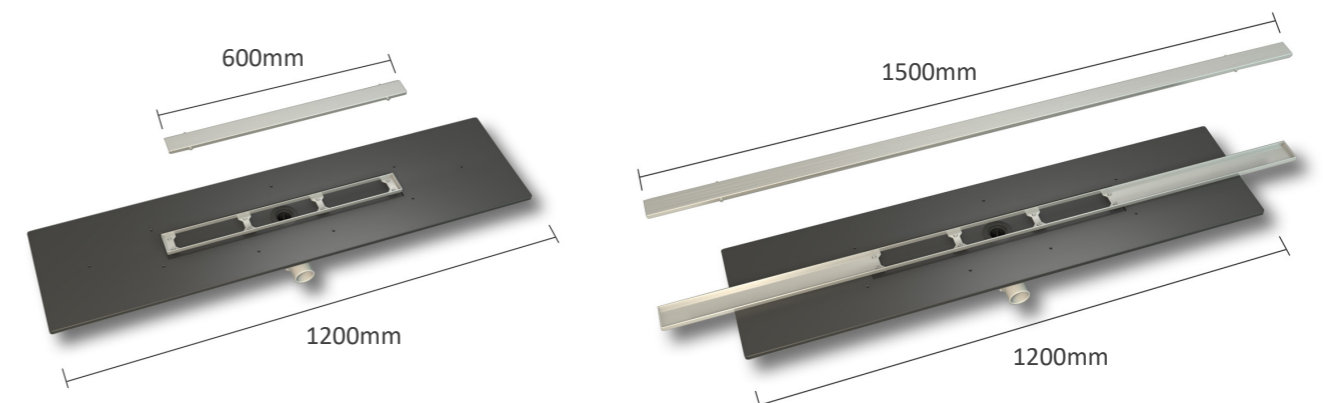
Waterproofing Apply W1 Floor Membrane and W3 Wall Membrane.

Note: For full details see separate installation instructions

17

Adjust as necessary following separate instructions supplied.

Regardless of the length of grill, the Drain Body always remains the same at 1200mm. Where the grill length exceeds 1200mm the ends of the grill overhang the drain body and are supported with tile adhesive - see images below.



Technical Helpline 01256 393453

3

8



Remove the ply support and position the trap and connect to the wastepipe.
Ensure the trap aligns with the hole drilled in the Drain Body.

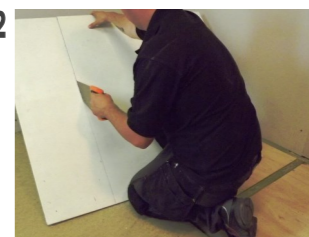
10



Connect the trap using the tightening tool provided, applying a bead of Jointing Compound around the neck of the tap.

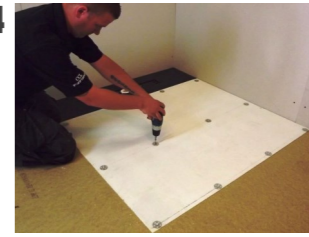
Note: Take care not to over tighten.

12



Trim the Shower Boards as necessary using a hand saw or similar.

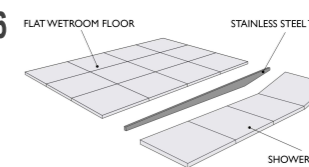
14



Fix the Shower Boards into position using the fixing washers provided.

Note: Take care to avoid any pipework or other obstacles.

16



Where necessary install the Tile Trim along the exposed tile edge