

## Series 5 Trap Cleaning

1. Using Grill Removal Key (supplied), remove grill & set aside carefully on a flat surface - Fig A
2. Carefully remove the diptube by pulling upwards - Fig B
3. Wash the diptube under clean running water until any residue has been removed - Fig C
4. Remove any debris and hair from the drain.
5. Replace the diptube and the grill

Fig A



Fig B

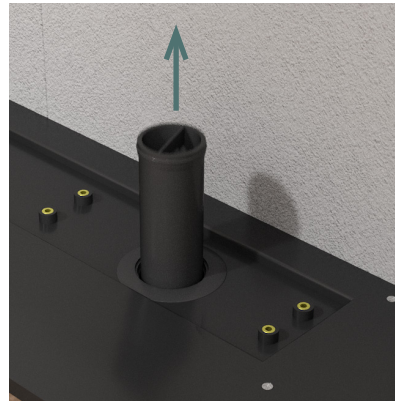


Fig C

